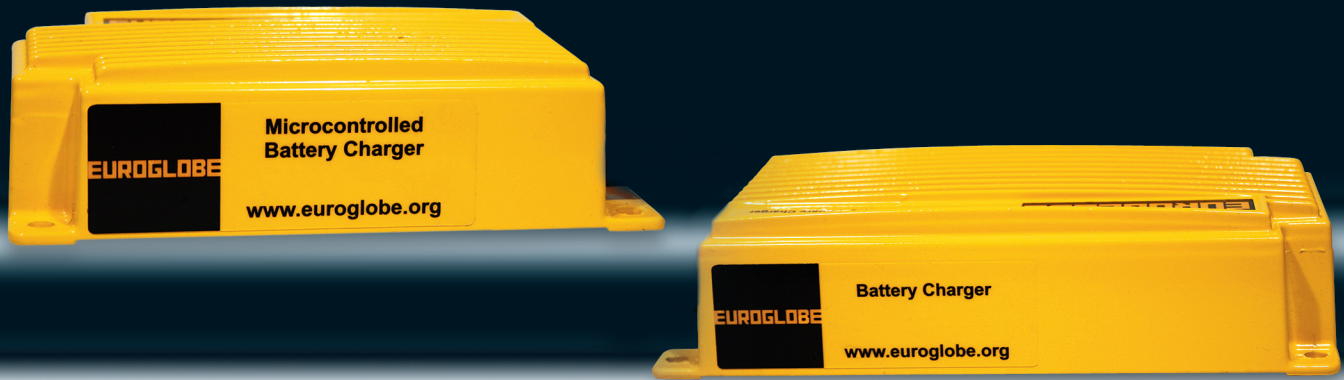


# ChAmp Charger



## chAmp Charger

Is designed for freely ventilated and valve regulated batteries.

The charger is small and very compact and can therefore easily be fitted close to the battery.

The charger operates in high frequency. The built in micro controller controls the charging process.

During charging the charging progress is displayed with status indicator LED on the front panel.

The micro-controller is also controlling the charging progress with regards to temperature in the charger and time. If a fault occurs in some cells or the temperature rises the charging current will be limited.

## chAmp Charger

Is suited for indoor and outdoor use. It can be used positioned horizontally on a table or a shelf, hang on a wall or as a built-in charger in the vehicle or machinery.

Technical data	90122 EG12V7A	90132 EG24V3A	90124 EG12V17	90134 EG24V12A
Measurements: L*W*H	155x80x43 mm		198x98x46 mm	
Weight:	0,8Kg		1,2kg	
Ambient Temperature:	-25 °C - +40 °C		-25 °C - +40 °C	
Mains Voltage:	230 Volt AC, 50 Hz		230 Volt AC, 50 Hz	
Secondary Cables:	1, 5 m x 1, 5 mm <sup>2</sup>		1, 5 m x 2,5mm <sup>2</sup>	
Protection:	1, IP 65		1, IP 65	
Output	14,8V / 13,7V	29,6V / 27,6	14,8V / 13,7	29,6V / 27,6V
Battery size	24-90 Ah	12-30 Ah	60-230 Ah	30-140 Ah